

0 1 2 3 4 m
GRAPHIC SCALE: 1/100

the view

FUENGIROLA

PARCELA UE 8.2-8.3
"SOLVILLA", FUENGIROLA. MÁLAGA

UNIT NUMBER: 28
APARTMENT TYPE: 3 BED/ 2 BATH

PORTAL 4
FLOOR: FIRST FLOOR (+39,15)
DOOR: C



www.alberroarquitectos.com

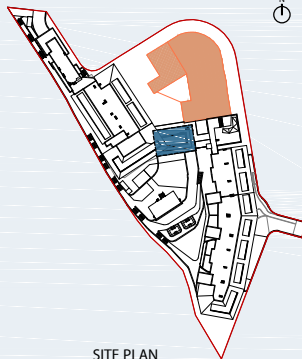
BUILT SURFACE AREA

| | |
|------------------|-----------------------|
| BUILT INTERIOR: | 115,78 m ² |
| COVERED TERRACE: | 55,49 m ² |
| OPEN TERRACE: | 0,00 m ² |
| TOTAL BUILT: | 171,27 m ² |

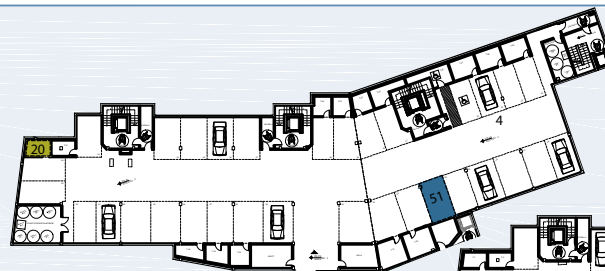
SURFACES ACCORDING TO R.D. 515/1989

| | |
|--------------|-----------------------|
| USEFUL AREA: | 127,36 m ² |
| GROSS AREA: | 186,80 m ² |

(*) "The areas are approximate and could vary for technical reasons, during the execution of works"
(**) "Gross and useful areas include 100% covered terrace"

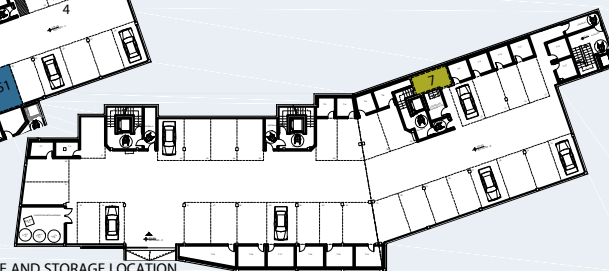


SITE PLAN

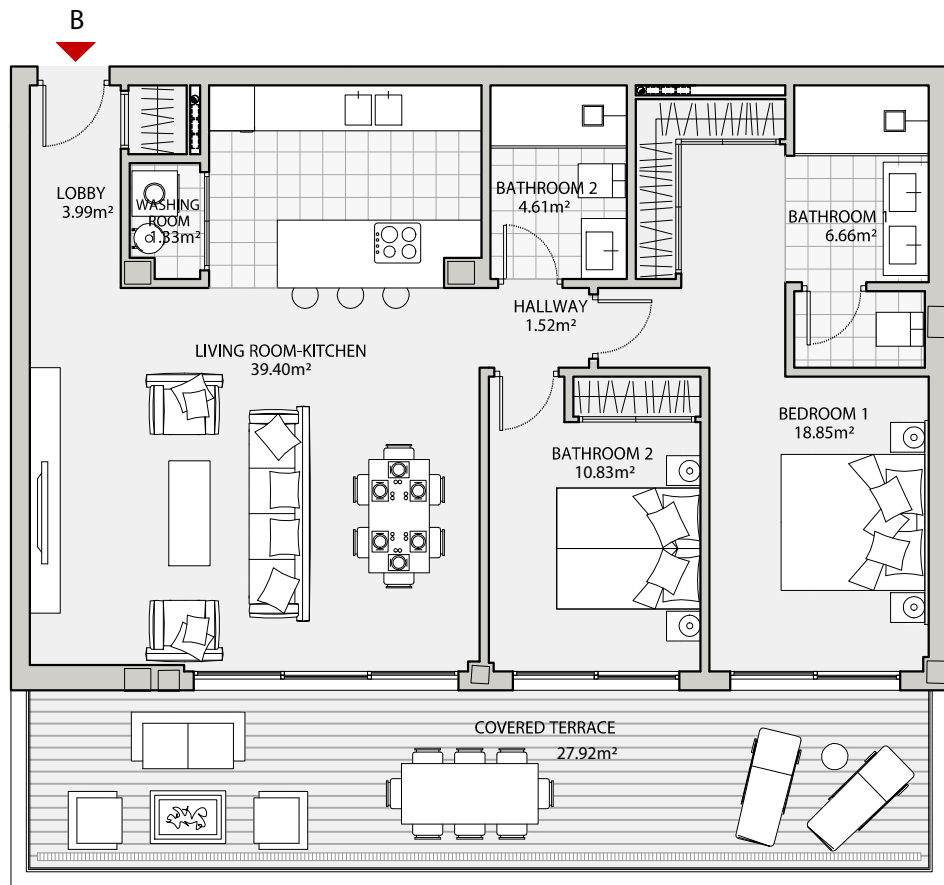
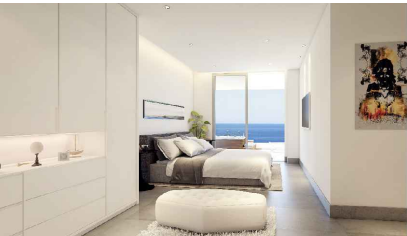


GARAGE AND STORAGE LOCATION
(LEVEL +29.25M)

- STORE ROOM Nº 7
- PARKING PLACE Nº 51 AND Nº 2, S2, P11



GARAGE AND STORAGE LOCATION
(LEVEL +25.95M)



the view

FUENGIROLA

PARCELA UE 8.2-8.3
"SOLVILLA", FUENGIROLA. MÁLAGA

UNIT NUMBER: 27
APARTMENT TYPE: 2 BED/ 2 BATH

PORTAL 1
FLOOR: FIRST FLOOR (+39,15)
DOOR: B



www.alberroarquitectos.com

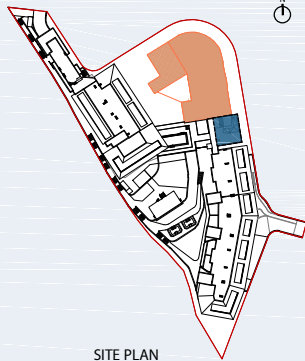
BUILT SURFACE AREA

| | |
|------------------|-----------------------|
| BUILT INTERIOR: | 87,19 m ² |
| COVERED TERRACE: | 27,92 m ² |
| OPEN TERRACE: | 0,00 m ² |
| TOTAL BUILT: | 115,11 m ² |

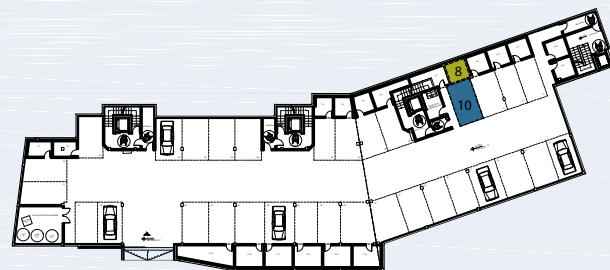
SURFACES ACCORDING TO R.D. 515/1989

| | |
|--------------|-----------------------|
| USEFUL AREA: | 95,91 m ² |
| GROSS AREA: | 140,15 m ² |

(*) "The areas are approximate and could vary for technical reasons, during the execution of works"
(**) "Gross and useful areas include 100% covered terrace"

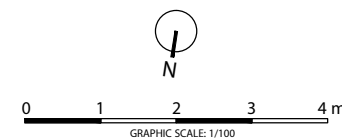
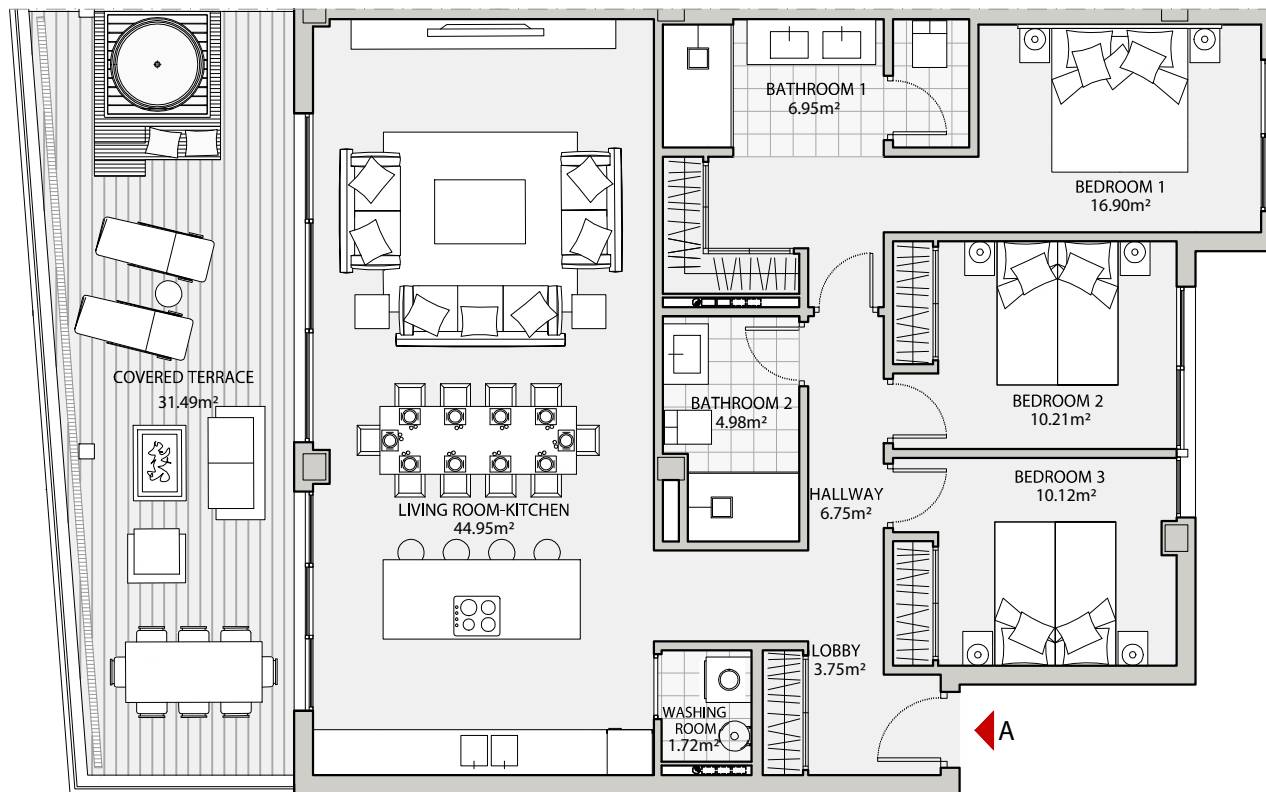
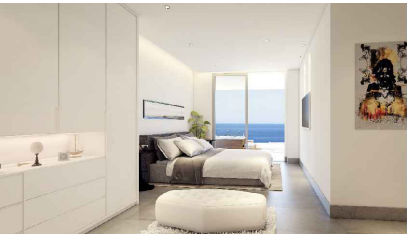


SITE PLAN



GARAGE AND STORAGE LOCATION
(LEVEL +25,95M)

- STORE ROOM Nº 8
- PARKING PLACE Nº 10 AND Nº 2, S2, P10



the view

FUENGIROLA

PARCELA UE 8.2-8.3
"SOLVILLA", FUENGIROLA. MÁLAGA

UNIT NUMBER: 26
APARTMENT TYPE: 3 BED/ 2 BATH

PORTAL 4
FLOOR: FIRST FLOOR (+39,15)
DOOR: A

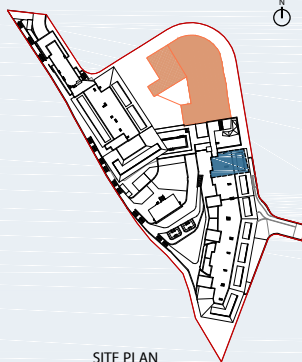
BUILT SURFACE AREA

| | |
|------------------|-----------------------|
| BUILT INTERIOR: | 106,33 m ² |
| COVERED TERRACE: | 31,49 m ² |
| OPEN TERRACE: | 0,00 m ² |
| TOTAL BUILT: | 137,82 m ² |

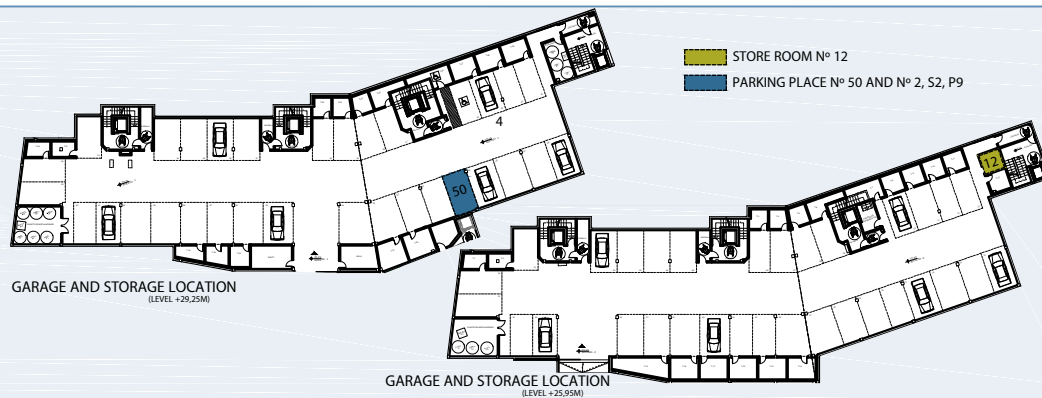
SURFACES ACCORDING TO R.D. 515/1989

| | |
|--------------|-----------------------|
| USEFUL AREA: | 116,96 m ² |
| GROSS AREA: | 169,10 m ² |

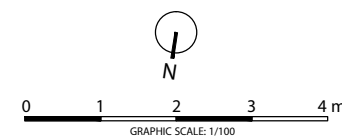
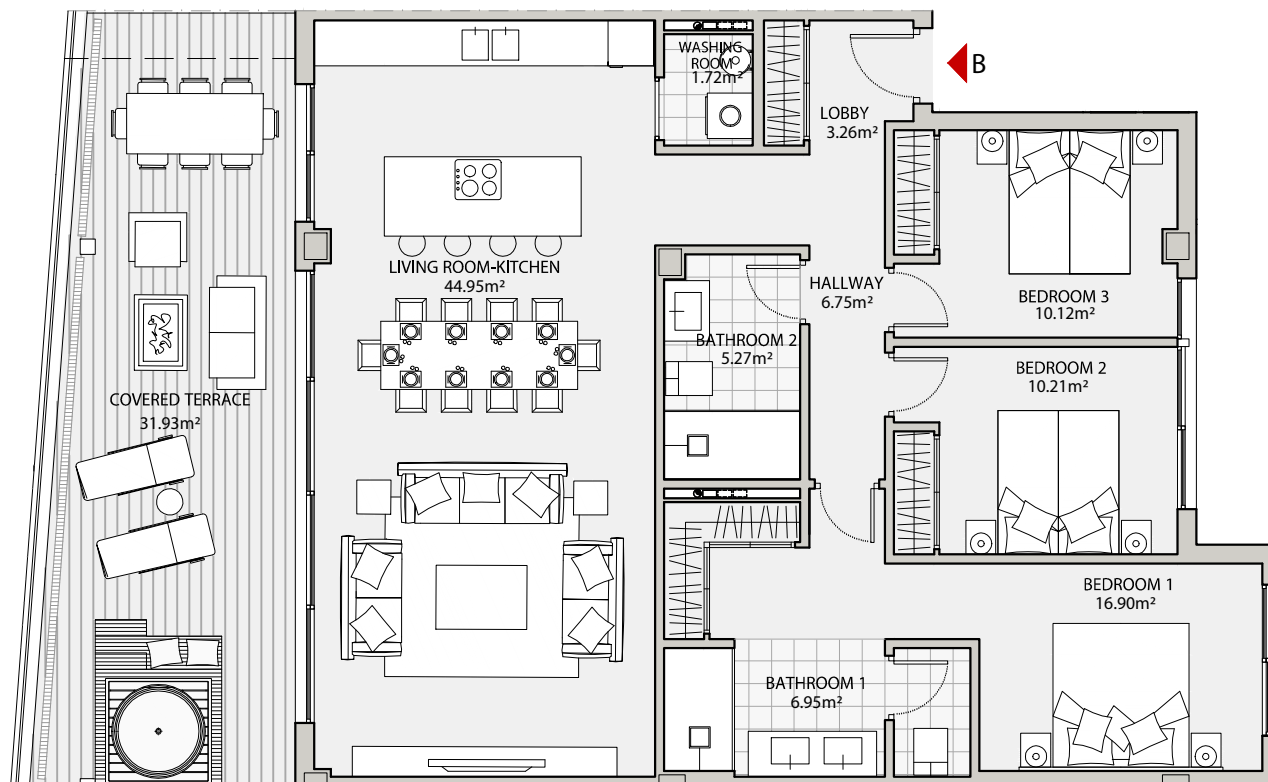
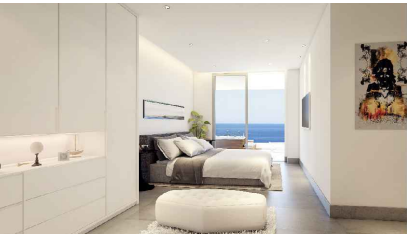
(*) "The areas are approximate and could vary for technical reasons, during the execution of works"
(**) "Gross and useful areas include 100% covered terrace"



SITE PLAN



www.alberroarquitectos.com



the view

FUENGIROLA

PARCELA UE 8.2-8.3
"SOLVILLA", FUENGIROLA. MÁLAGA

UNIT NUMBER: 21
APARTMENT TYPE: 3 BED/ 2 BATH

PORTAL 3
FLOOR: SECOND FLOOR (+39,15)
DOOR: B



www.alberroarquitectos.com

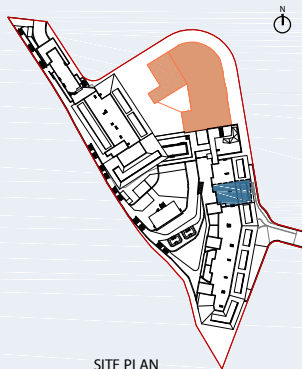
BUILT SURFACE AREA

| | |
|------------------|-----------------------|
| BUILT INTERIOR: | 106,13 m ² |
| COVERED TERRACE: | 31,93 m ² |
| OPEN TERRACE: | 0,00 m ² |
| TOTAL BUILT: | 138,06 m ² |

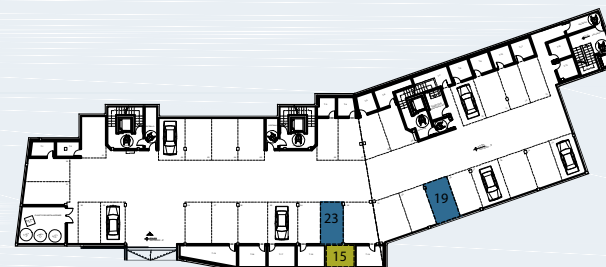
SURFACES ACCORDING TO R.D. 515/1989

| | |
|--------------|-----------------------|
| USEFUL AREA: | 116,74 m ² |
| GROSS AREA: | 168,14 m ² |

(*) "The areas are approximate and could vary for technical reasons, during the execution of works"
(**) "Gross and useful areas include 100% covered terrace"

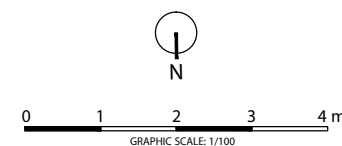
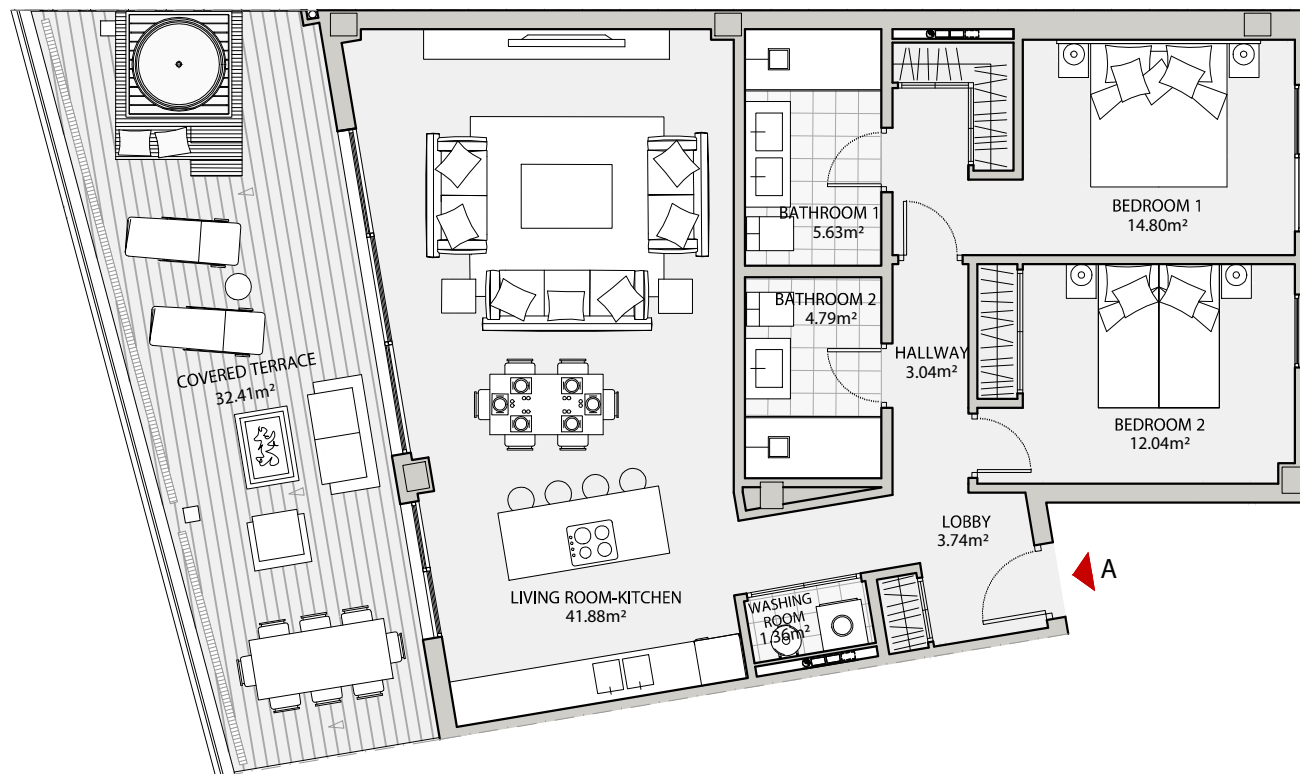
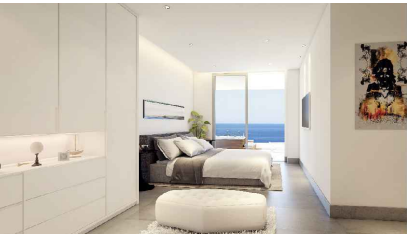


SITE PLAN



GARAGE AND STORAGE LOCATION
(LEVEL +25,95M)

- STORE ROOM Nº 15
- PARKING PLACE Nº 19 AND Nº 23



the view

FUENGIROLA

PARCELA UE 8.2-8.3
"SOLVILLA", FUENGIROLA. MÁLAGA

UNIT NUMBER: 20
APARTMENT TYPE: 2 BED/ 2 BATH

PORTAL 3
FLOOR: SECOND FLOOR (+39,15)
DOOR: A



www.alberroarquitectos.com

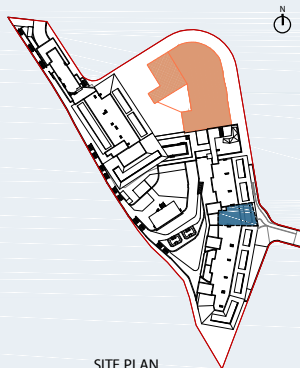
BUILT SURFACE AREA

| | |
|------------------|-----------------------|
| BUILT INTERIOR: | 87,28 m ² |
| COVERED TERRACE: | 32,41 m ² |
| OPEN TERRACE: | 0,00 m ² |
| TOTAL BUILT: | 119,69 m ² |

SURFACES ACCORDING TO R.D. 515/1989

| | |
|--------------|-----------------------|
| USEFUL AREA: | 96,01 m ² |
| GROSS AREA: | 138,81 m ² |

(*) "The areas are approximate and could vary for technical reasons, during the execution of works"
(**) "Gross and useful areas include 100% covered terrace"

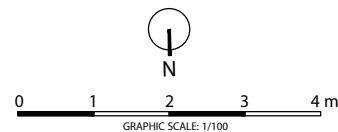
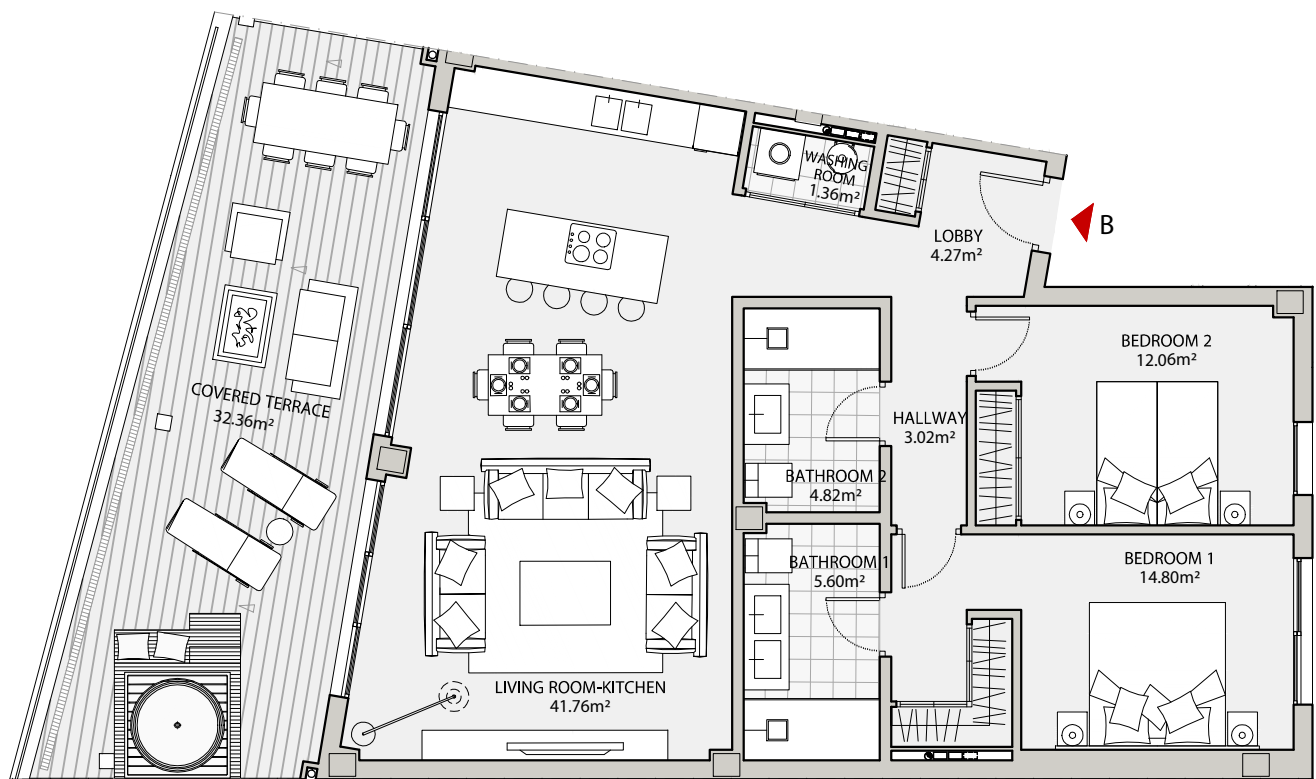
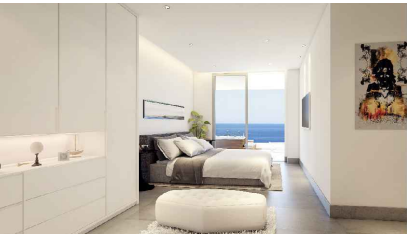


SITE PLAN



GARAGE AND STORAGE LOCATION
(LEVEL +29,25M)

STORE ROOM Nº 30
PARKING PLACE Nº 42 AND Nº 52



the view

FUENGIROLA

PARCELA UE 8.2-8.3
"SOLVILLA", FUENGIROLA. MÁLAGA

UNIT NUMBER: 14
APARTMENT TYPE: 2 BED/ 2 BATH

PORTAL 2
FLOOR: SECOND FLOOR (+39,15)
DOOR: B



www.alberroarquitectos.com

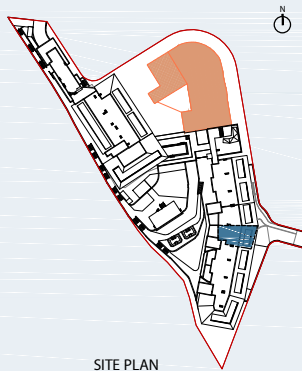
BUILT SURFACE AREA

| | |
|------------------|-----------------------|
| BUILT INTERIOR: | 87,69 m ² |
| COVERED TERRACE: | 32,36 m ² |
| OPEN TERRACE: | 0,00 m ² |
| TOTAL BUILT: | 120,05 m ² |

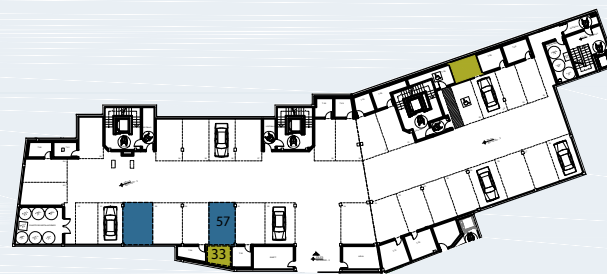
SURFACES ACCORDING TO R.D. 515/1989

| | |
|--------------|-----------------------|
| USEFUL AREA: | 96,46 m ² |
| GROSS AREA: | 139,50 m ² |

(*) "The areas are approximate and could vary for technical reasons, during the execution of works"
(**)"Gross and useful areas include 100% covered terrace"

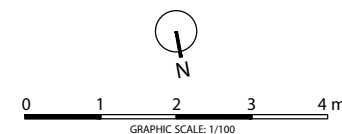
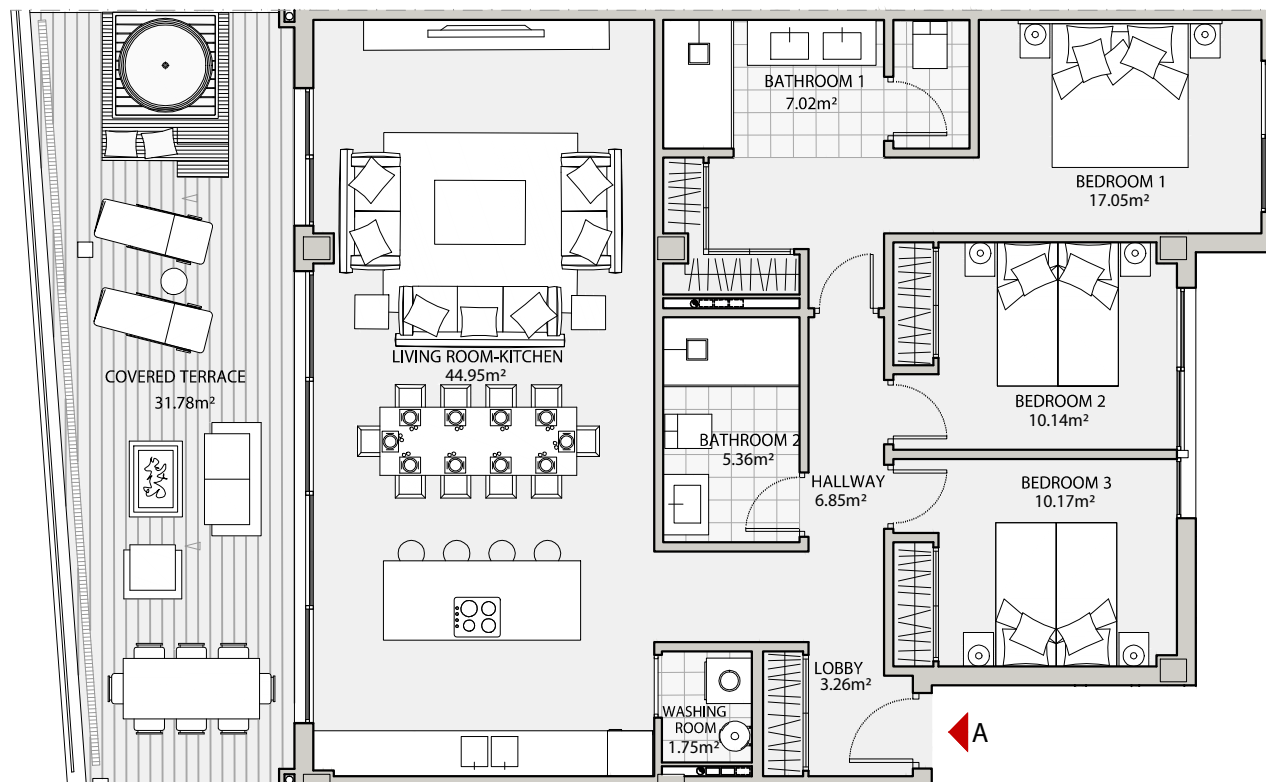
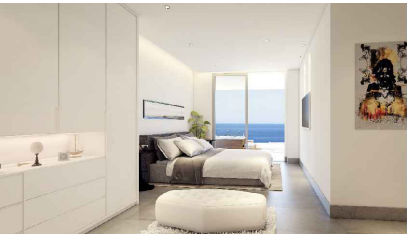


SITE PLAN



GARAGE AND STORAGE LOCATION
(LEVEL +29,25M)

- STORE ROOM N° 33
- PARKING PLACE N° 57 AND N° 60



the view

FUENGIROLA

PARCELA UE 8.2-8.3
"SOLVILLA", FUENGIROLA. MÁLAGA

UNIT NUMBER: 13
APARTMENT TYPE: 3 BED/ 2 BATH

PORTAL 2
FLOOR: SECOND FLOOR (+39,15)
DOOR: A



www.alberroarquitectos.com

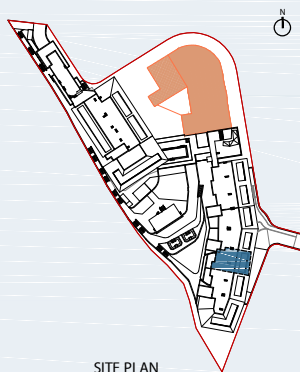
BUILT SURFACE AREA

| | |
|------------------|-----------------------|
| BUILT INTERIOR: | 106,55 m ² |
| COVERED TERRACE: | 31,78 m ² |
| OPEN TERRACE: | 0,00 m ² |
| TOTAL BUILT: | 138,33 m ² |

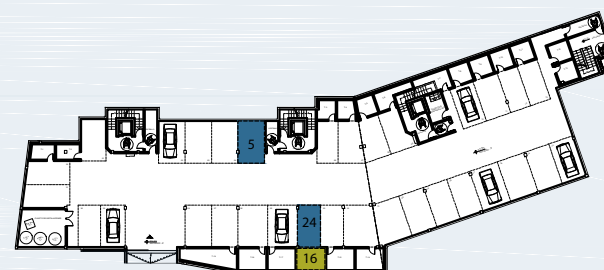
SURFACES ACCORDING TO R.D. 515/1989

| | |
|--------------|-----------------------|
| USEFUL AREA: | 117,21 m ² |
| GROSS AREA: | 168,87 m ² |

(*) "The areas are approximate and could vary for technical reasons, during the execution of works"
(**) "Gross and useful areas include 100% covered terrace"

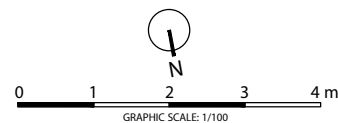
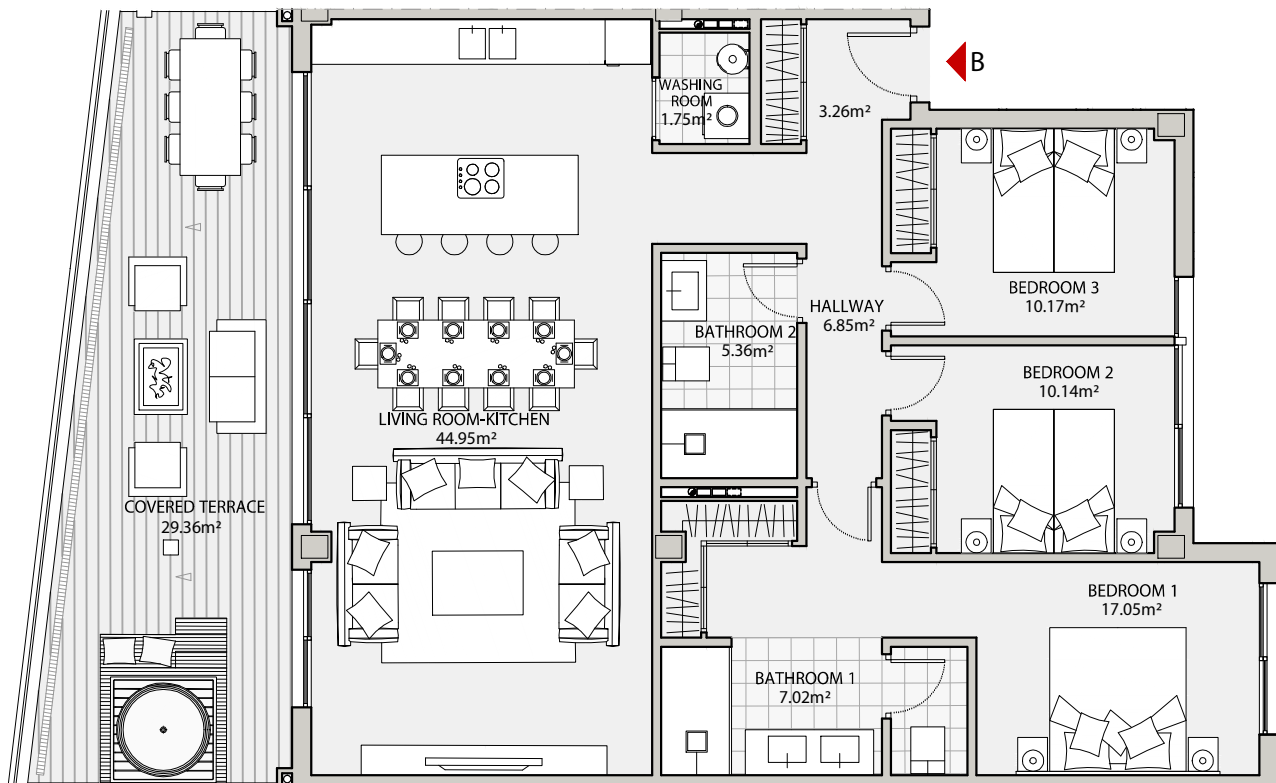
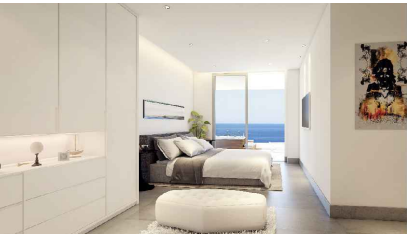


SITE PLAN



GARAGE AND STORAGE LOCATION
(LEVEL +25,95M)

- STORE ROOM Nº 16
- PARKING PLACE Nº 5 AND Nº 24



the view

FUENGIROLA

PARCELA UE 8.2-8.3
"SOLVILLA", FUENGIROLA. MÁLAGA

UNIT NUMBER: 6
APARTMENT TYPE: 2 BED/ 2 BATH

PORTAL 1
FLOOR: SECOND FLOOR (+39,15)
DOOR: B



www.alberroarquitectos.com

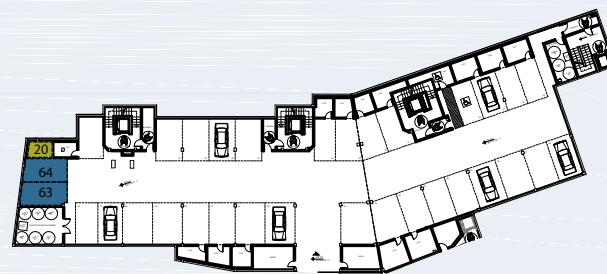
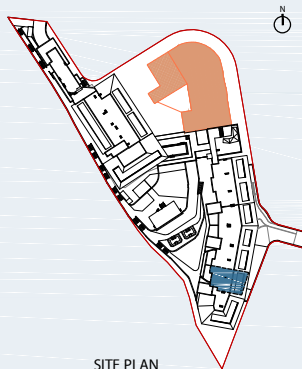
BUILT SURFACE AREA

| | |
|------------------|-----------------------|
| BUILT INTERIOR: | 106,55 m ² |
| COVERED TERRACE: | 29,36 m ² |
| OPEN TERRACE: | 0,00 m ² |
| TOTAL BUILT: | 135,91 m ² |

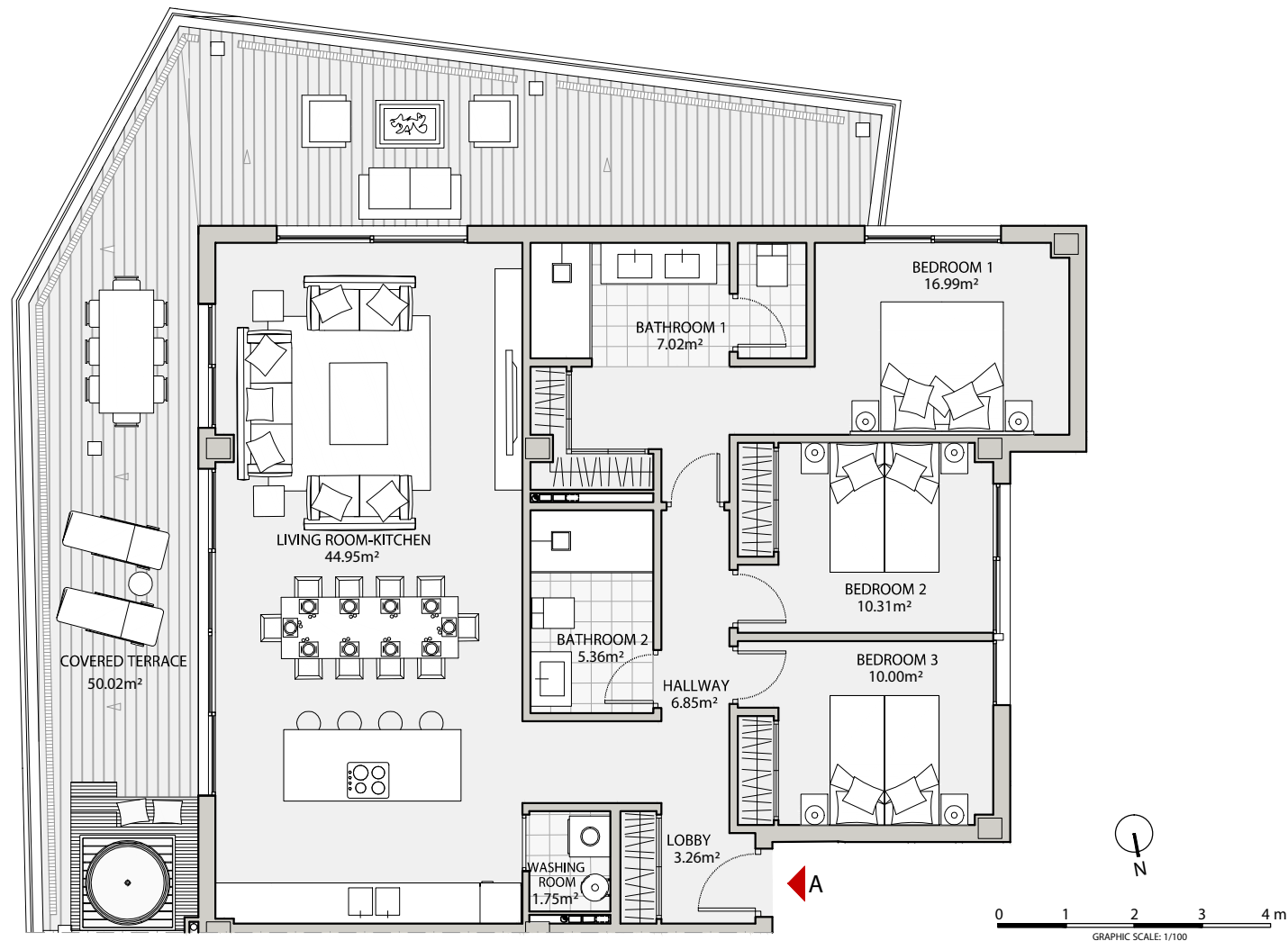
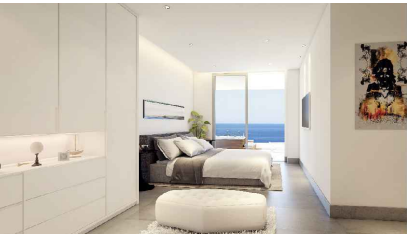
SURFACES ACCORDING TO R.D. 515/1989

| | |
|--------------|-----------------------|
| USEFUL AREA: | 117,21 m ² |
| GROSS AREA: | 168,88 m ² |

(*) "The areas are approximate and could suffer variations due to technical systems and the execution of the work"
(**) "Gross and useful areas include 100% covered terrace"



STORE ROOM Nº 20
PARKING PLACE Nº 63 AND Nº 64



the view

FUENGIROLA

PARCELA UE 8.2-8.3
"SOLVILLA", FUENGIROLA. MÁLAGA

UNIT NUMBER: 5
APARTMENT TYPE: 3 BED/ 2 BATH

PORTAL 1
FLOOR: SECOND FLOOR (+39,15)
DOOR: A



www.alberroarquitectos.com

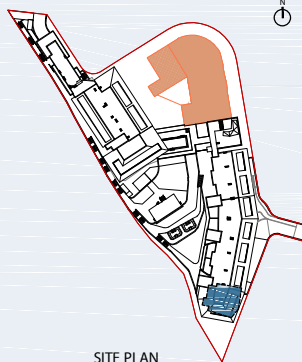
BUILT SURFACE AREA

| | |
|------------------|-----------------------|
| BUILT INTERIOR: | 106,49 m ² |
| COVERED TERRACE: | 50,02 m ² |
| OPEN TERRACE: | 0,00 m ² |
| TOTAL BUILT: | 156,51 m ² |

SURFACES ACCORDING TO R.D. 515/1989

| | |
|--------------|-----------------------|
| USEFUL AREA: | 117,14 m ² |
| GROSS AREA: | 172,66 m ² |

(*) "The areas are approximate and could vary for technical reasons, during the execution of works"
(**) "Gross and useful areas include 100% covered terrace"



SITE PLAN



GARAGE AND STORAGE LOCATION
(LEVEL +29,25M)

- STORE ROOM Nº 21
- PARKING PLACE Nº 33 AND Nº 34